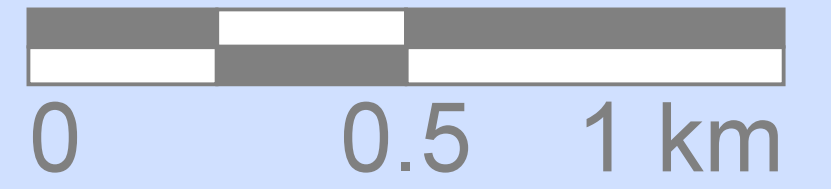
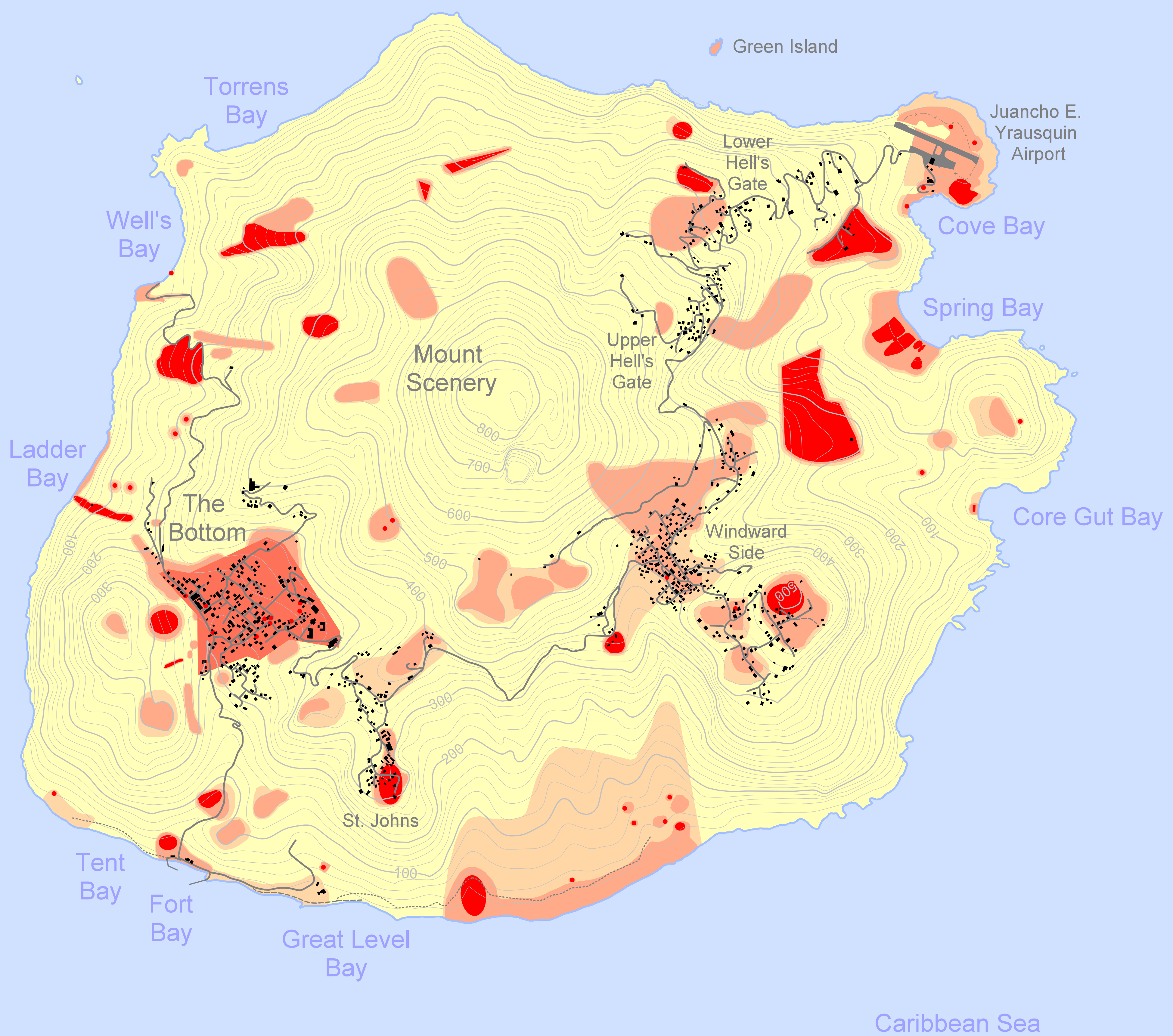


Saba, Caribbean Netherlands Archaeological Predictive Map 1 : 10 000

N



Caribbean Sea



Legend

- Roads
- - - Tracks
- Trails
- · - Fences
- Height contours (interval 20 m)
- Buildings
- Archaeological sites
- Historical city
- High archaeological expectancy
- Medium archaeological expectancy
- Low archaeological expectancy

Produced by:

ARGEOgraph

Supported by: SABARC



Directed by:



**Universiteit
Leiden**

More information: www.argeograph.nl/project/saba2015

Creative Commons License by ARGEOgraph, 2015