

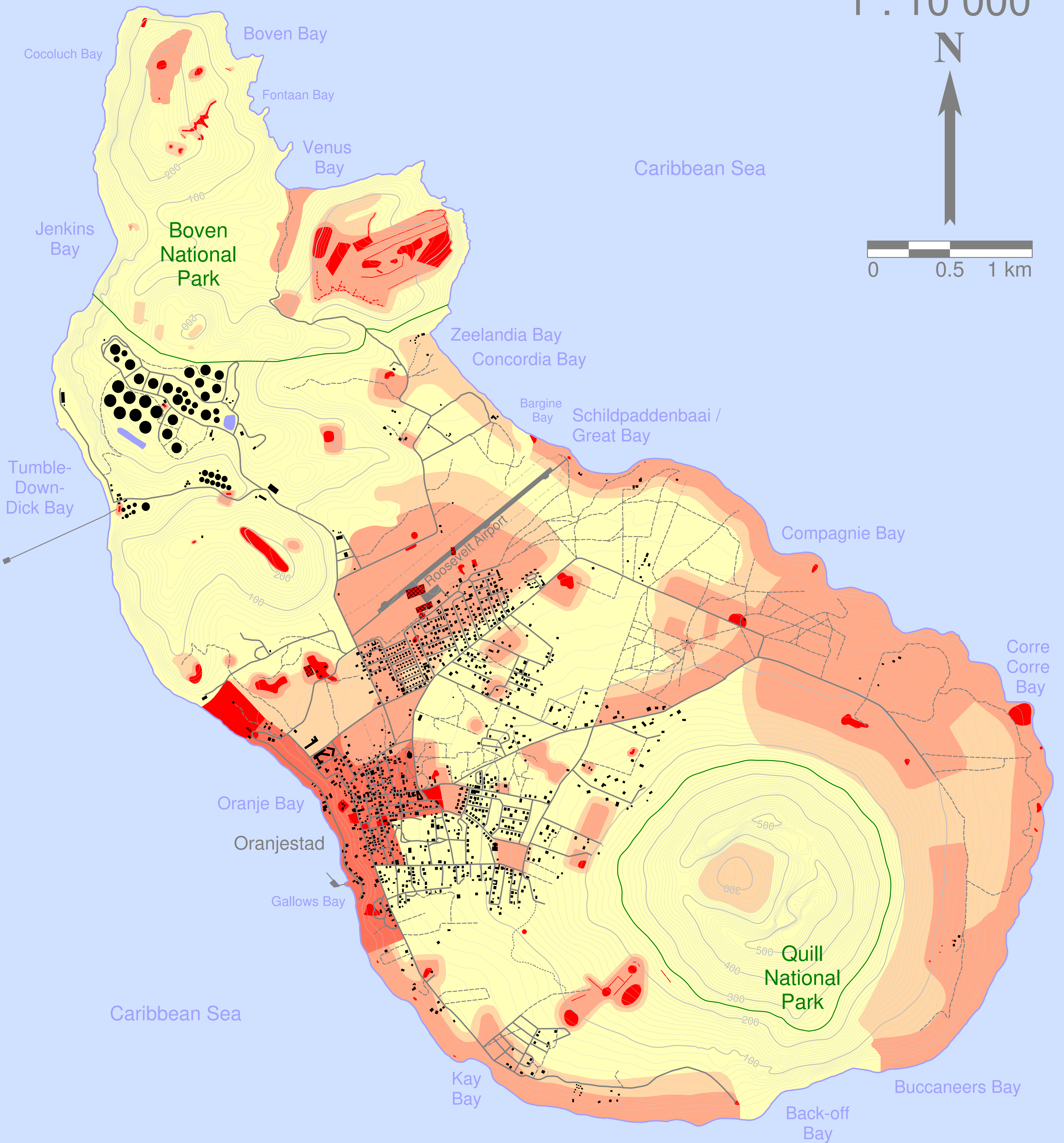
# Sint Eustatius, Caribbean Netherlands Archaeological Predictive Map

1 : 10 000

N



0 0.5 1 km



## Legend

- |                                   |   |
|-----------------------------------|---|
| — Roads                           | ■ Archaeological sites                        |
| - - - Tracks                      | ■ Excavated archaeological sites              |
| ⋯ Trails                          | --- Archaeological walls (position uncertain) |
| - - - Fences                      | ■ Historical city                             |
| — Height contours (interval 10 m) | ■ High archaeological expectancy              |
| ■ Buildings and storage tanks     | ■ Medium archaeological expectancy            |
| ■ Water                           | ■ Low archaeological expectancy               |

Produced by:

**ARGEograph**

Directed by: **S. E. C. A. R.**



Supported by:



**Universiteit  
Leiden**

More information: [www.argeograph.nl/project/eustatius2013](http://www.argeograph.nl/project/eustatius2013) Creative Commons License by ARGEograph, 2013